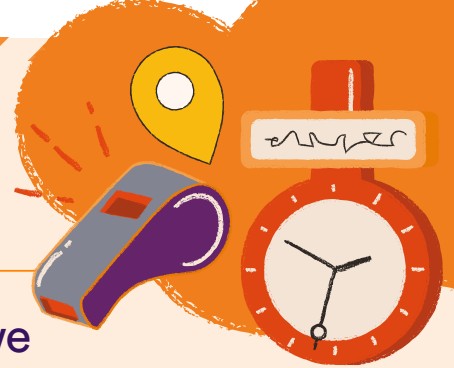


# Industrial Action Timetable:

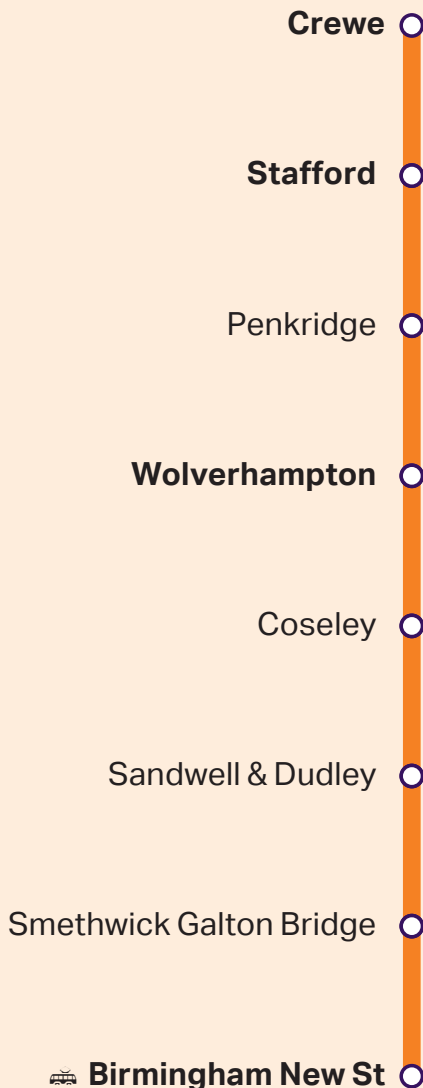
Tuesday 21, Thursday 23 and Saturday 25 June 2022



8

## Birmingham to Wolverhampton and Crewe

Crewe – Wolverhampton – Birmingham



### Industrial action will affect our train services on Tuesday 21, Thursday 23 and Saturday 25 June 2022

#### What's happening?

Because of industrial action by members of the National Union of Rail, Maritime and Transport Workers (RMT), we will run a reduced service on Tuesday 21, Thursday 23 and Saturday 25 June 2022.

We will only be able to provide a very basic service, but you can still travel around the West Midlands by other public transport – you can plan your journey at [networkwestmidlands.com](https://www.networkwestmidlands.com)

We are working hard to resolve this dispute with the RMT as quickly as we can – please note the affected dates could change at the last minute, so check your journey again before you travel.

On an affected day:

- There will be fewer trains running,
- Some stations will not be served,
- Some West Midlands Railway services will finish earlier than normal, there will be no additional replacement bus services.

#### Our advice

**Plan ahead:** Check your journey now and again just before you travel – be aware that train times may change at last minute, on the day.

**Consider alternative travel:** A very limited service will be in operation and trains are expected to be very busy. Customers are advised to travel with us only if their journey is essential and cannot be made via another transport mode.

#### What are my rights?

##### Delay Repay:

If your journey is delayed by 15 minutes or more, you're entitled to compensation under our Delay Repay scheme. Please keep a hold of your ticket and submit your claim within 28 days.

##### Get your money back if you choose not to travel...

Under the National Rail Conditions of Travel, if you have purchased a ticket and your train is cancelled or delayed, and you choose not to travel, you can return the unused ticket to the retailer you bought the ticket from and you will be given a full refund with no administration fee being charged. This applies to all tickets including those which are usually non-refundable.

#### Keep up to date, before and on the day

We want to keep our customers informed, and provide you with updates as they happen:

- The Journey Planner at [wmr.uk/plan](https://www.wmr.uk/plan) will show the train services that will be in operation on the strike days a few days before.
- Check your journey again before you travel.
- Check our 'Travel Updates' at [wmr.uk/updates](https://www.wmr.uk/updates)
- Follow us on Twitter for real-time updates: @WestMidRailway

#### What trains will we be running?

A summary of the train service we plan to run can be found at [wmr.uk/industrialaction](https://www.wmr.uk/industrialaction)

From Crewe	To Wolverhampton	To Birmingham New St
First Train	0751	0751
Last Train	1653	1653
Trains Per Hour	1	1
From Wolverhampton	To Birmingham New St	To Crewe
First Train	0732	0821
Last Train	1748	1722
Trains Per Hour	2	1
From Birmingham New St	To Wolverhampton	To Crewe
First Train	0803	0803
Last Train	1807	1704
Trains Per Hour	2	1

## Crewe and Wolverhampton to Birmingham

Crewe	d		0751	0853	0955	1052	1152	1251	1353	1451	1554	1653	
Stafford	d		0812	0911	1014	1111	1212	1313	1412	1511	1611	1711	
Penkridge	d		0818	0917	1020	1117	1218	1319	1418	1517	1617	1717	
Wolverhampton	a		0828	0928	1030	1127	1228	1329	1428	1528	1628	1727	
Wolverhampton	d	0732	0750	0831	0848	0930	0948	1031	1049	1131	1148	1230	1248
Coseley	d		0755		0853		0953		1054		1153		1253
Tipton	d		0759		0856		0956		1057		1156		1256
Dudley Port	d		0801		0858		0958		1059		1158		1258
Sandwell & Dudley	d		0805		0902		1002		1103		1202		1302
Smethwick Galton Bridge	d	0742	0808	0843	0905	0942	1005	1042	1106	1143	1205	1243	1305
Smethwick Rolfe Street	d		0811		0907		1007		1108		1207		1307
Birmingham New St	a	0749	0819	0850	0916	0950	1017	1050	1116	1150	1215	1250	1315

## Birmingham to Wolverhampton and Crewe

Birmingham New St	d	0803	0807	0904	0907	1004	1007	1104	1107	1204	1207	1304	1307	1404	1407	1504	1507	1604	1607	1704	1707	1800	1807
Smethwick Rolfe Street	d		0812		0912		1012		1112		1212		1312		1412		1512		1612		1712	1805	
Smethwick Galton Bridge	d	0810	0815	0910	0915	1010	1015	1110	1115	1210	1215	1310	1315	1410	1415	1510	1515	1610	1615	1710	1715	1808	1814
Sandwell & Dudley	d		0818		0918		1018		1118		1218		1318		1418		1518		1618		1718	1811	
Dudley Port	d		0822		0922		1022		1122		1222		1322		1422		1522		1622		1722	1815	
Tipton	d		0824		0924		1024		1124		1224		1324		1424		1524		1624		1724	1817	
Coseley	d		0827		0927		1027		1127		1227		1327		1427		1527		1627		1727	1820	
Wolverhampton	a	0821	0832	0921	0932	1021	1032	1121	1132	1221	1232	1321	1332	1421	1432	1521	1532	1621	1632	1721	1732	1825	1826
Wolverhampton	d	0821		0922		1022		1122		1222		1322		1422		1522		1622		1722			
Penkridge	d	0830		0930		1030		1131		1231		1330		1431		1531		1631		1731			
Stafford	d	0838		0939		1038		1138		1240		1340		1438		1538		1639		1738			
Crewe	a	0856		0957		1056		1157		1258		1358		1456		1558		1657		1756			

### Notes & Symbols

- PlusBus add-on tickets available.
- Connection with West Midlands Metro

- a Arrival time
- d Departure time



### Check before you travel...

There are fewer trains running than normal – and we expect our trains to be very busy. We'll be working really hard to run all of the trains on our timetable – but things can change on the day.

Check your train times before you set out:  
use our app or visit [nationalrail.co.uk](https://www.nationalrail.co.uk)